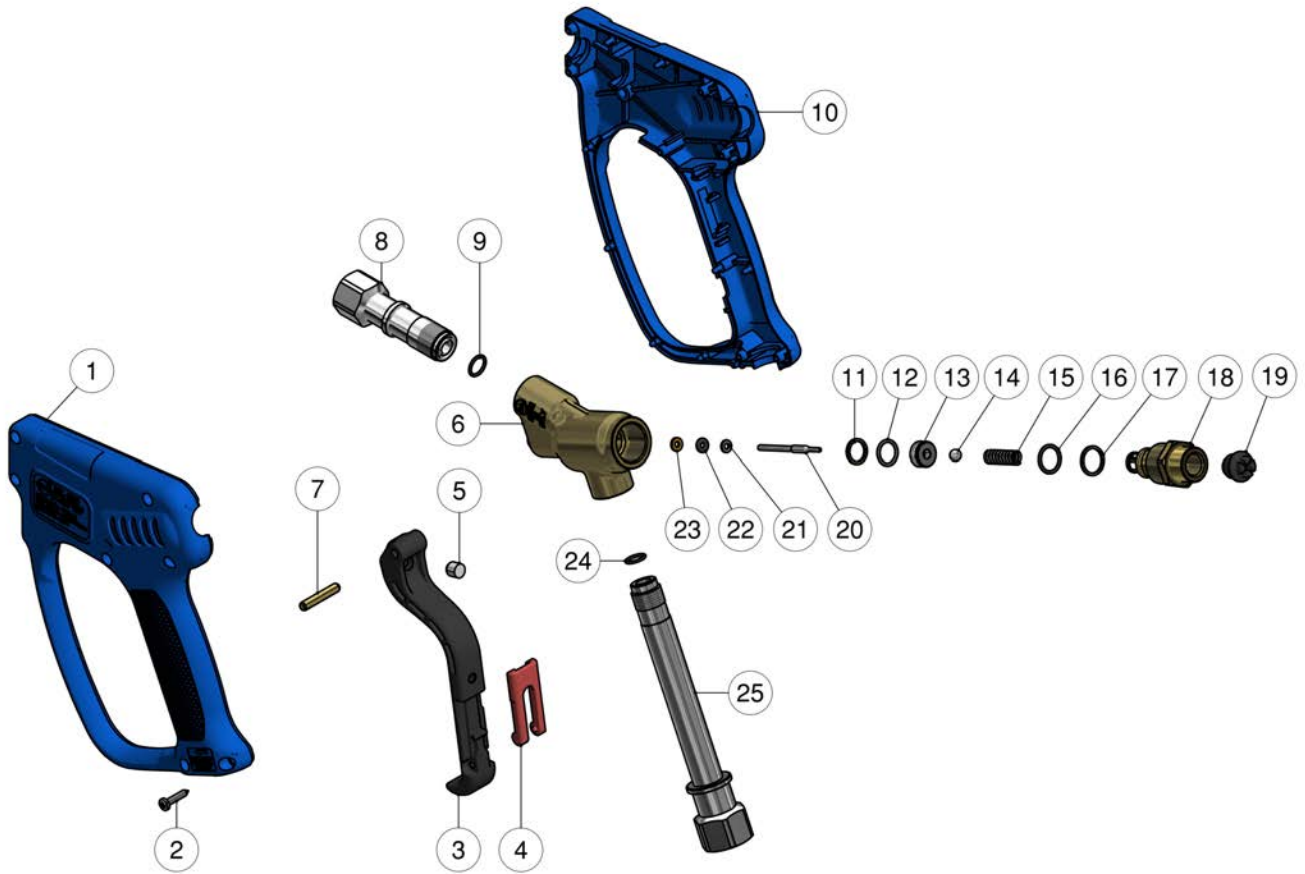


30.5530.00 RL500 Spray gun 3/8 FF Bsp



Pos.	P/N	Description	Q.ty	K1	K2	K3	K4		Pos.	P/N	Description	Q.ty	K1	K2	K3	K4	
1	30.5539.24	Casing-kit -RL500 + screws, Sst.	1					1	14	14.7423.00R	Ball, 1/4" Sst.	1					10
2	16.3075.51R	S/tapping scr. 3,5x18 mm sst.	7					10	15	30.5534.51R	Spring, 1,6x10x22 mm Sst.	1					10
3	30.5804.84R	Trigger -RL600, PA black	1					5	16	10.3060.01R	O-ring, 1,78x12,42 mm Ni 85	1					10
4	30.1510.84R	Safety latch, PA red	1					10	17	10.4013.00R	Back-up ring, 16x13,2x1,2 mm	1					10
5	30.0682.51R	Stop pin, 8x7,3mm Sst.	1					10	18	30.5537.31R	Spring holder	1					5
6	30.5535.35R	Housing -RL500, brass	1					1	19	30.5815.84R	Plug, 1/4M Bsp DIN259 Plast. black	1					10
7	30.2517.31R	Parallel pin, 5x27,5 mm brass	1					10	20	30.5531.51R	Piston, 3 mm Sst.	1					10
8	30.5536.51R	Front body, 3/8F Bsp Sst.	1					3	21	30.5533.51R	Washer, 7x3,2x1 Sst.	1					10
9	10.3020.02R	O-ring, 1,5x10 mm Ni 85	1					10	22	10.3165.00R	O-ring, 2,62x2,84 mm Vi 70	1					10
11	10.4090.00R	Back-up ring, 11,2x14x1,5 mm	1					10	23	10.4018.00R	Back-up ring, 3,2x7,5x1,2 mm	1					10
12	10.3059.01R	O-ring, 1,78x11,11 mm Ni 85	1					10	25	30.5903.51R	Sst coupl., 3/8F Bsp	1					5
13	30.5532.51R	Seat, 5x13,9x6,7 mm	1					10									