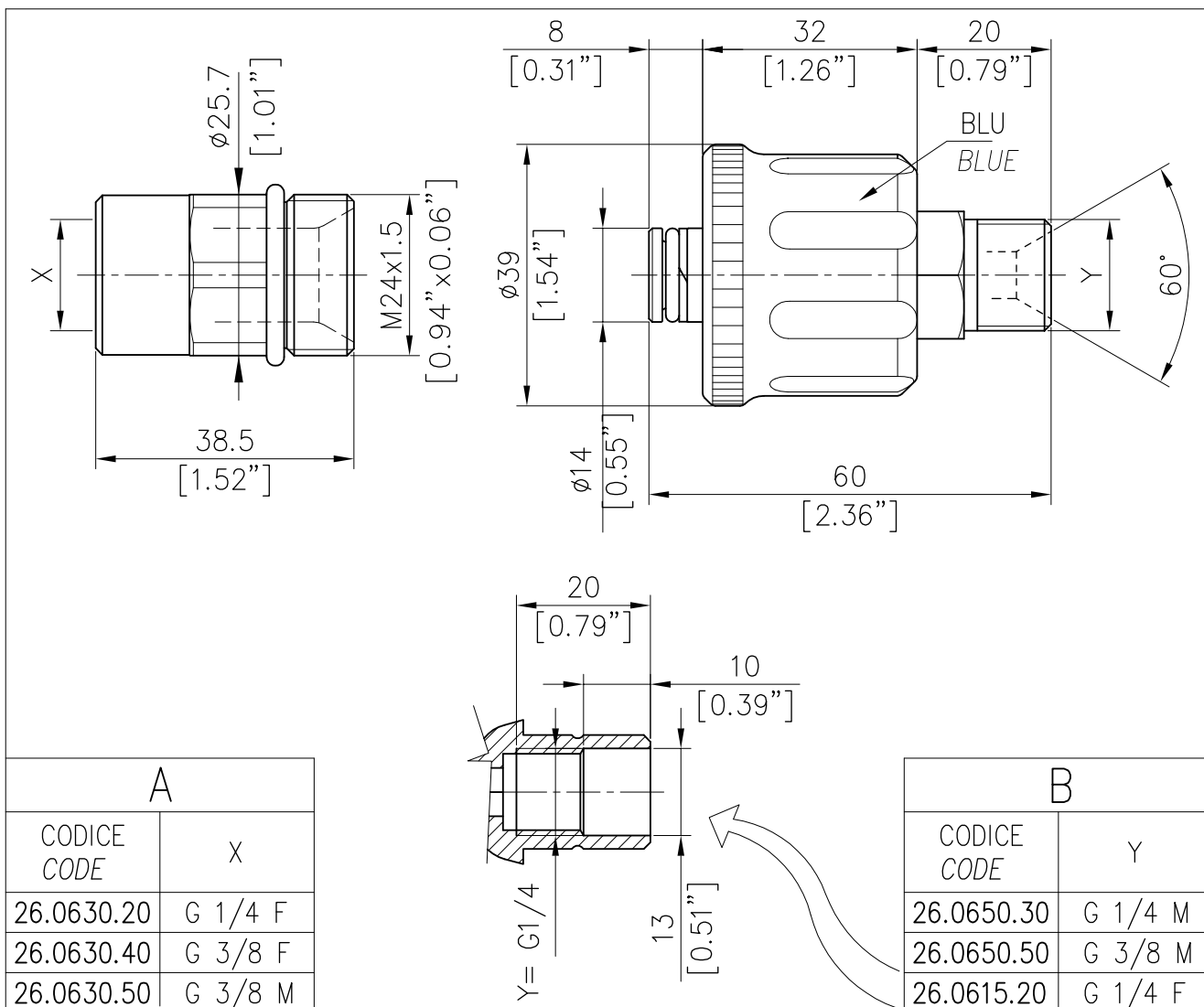
	<b>E</b> QUIPAGGIAMENTI <b>T</b> ECNICI <b>L</b> AVAGGIO	<b>AR8</b> ATTACCO PROLUNGATO 2 O-RING – M24 – D.14 mm. <b>AR8</b> EXTENDET QUICK COUPLING 2 O-RING – M24 – D.0.55 in.	(I) (GB)	<b>5</b>
				19/06/14



CARATTERISTICHE TECNICHE  
 SPECIFICATIONS

- PRESSIONE NOMINALE	RATED PRESSURE	350 bar – 35 MPa (5100 psi)
- PRESSIONE CONSENTITA	PERMISSIBLE PRESSURE	390 bar – 39 MPa (5650 psi)
- PORTATA MASSIMA	MAX FLOW RATE	30 l/min (8 USG p.m.)
- TEMPERATURA MASSIMA	MAX WORKING TEMPERATURE	160° C (320°F)
- MATERIALE	CORPO E NIPPOLO IN OTTONE CON MANOPOLA IN PLASTICA ANTIURTO E GUARNIZIONI OR IN VITON. BRASS BODY AND NIPPLE WITH SHOCKPROOF PLASTIC HANDLE AND VITON O RINGS.	
MATERIAL		

MISURE D'INGOMBRO  
 OVERALL DIMENSIONS

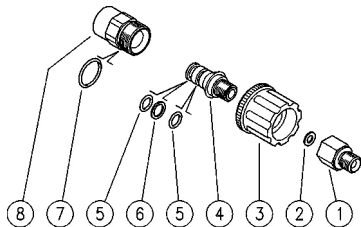


A	
CODICE CODE	X
26.0630.20	G 1/4 F
26.0630.40	G 3/8 F
26.0630.50	G 3/8 M

B	
CODICE CODE	Y
26.0650.30	G 1/4 M
26.0650.50	G 3/8 M
26.0615.20	G 1/4 F

26.0630.20 AR8 A M24 nipplo a ghiera-G1/4F

26.0630.40 AR8 A M24 nipplo a ghiera -G3/8F



26.0650.30 AR8 B M24 3pz att.rap.ghiera-G1/4M

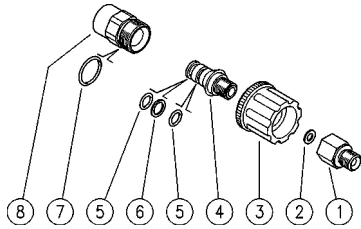
26.0650.50 AR8 B M24 3pz att.rap.ghiera-G3/8 M

Pos.	Codice	Descrizione	Q.tà	K1	K2	K3	K4	
1	26.0007.31	Raccordo G1/4 MF ott. (1)	1					10
1	26.0036.31	Raccordo G3/8 M-G1/4 F ott. (1)	1					10
2	14.3562.05	Rosetta 6x11x1mm Cu	1					10
3	26.0652.22	Girello M24x1,5 - 17,5mm blu	1					3
4	26.0651.31	Spinotto 14mm-G1/4M ott.	1					3
5	10.3109.95	An.OR 2,4x9,3 mm Vi 70	2					25
6	10.4010.01	An. anties. a. 10,2x13,9x1,2 mm	1					50
7	10.3185.00	An.OR 2,5x20 mm	1					10
8	26.0631.31	Raccordo M24x1,5-G1/4 F ott. (2)	1					3
8	26.0632.31	Raccordo M24x1,5-G3/8 F ott. (3)	1					3

(1) 26.0650.30 (2) 26.0630.20 (3) 26.0630.40

26.0630.20 AR8 A M24 screw-type nipple -1/4F Bsp

26.0630.40 AR8 A M24 screw-type nipple -3/8F Bsp



26.0650.30 AR8 B M24 3pcs screw.coupl.-1/4M Bsp

26.0650.50 AR8 B M24 3pcs screw.coupler-3/8M Bsp

Pos.	P/N	Description	Q.ty	K1	K2	K3	K4	
1	26.0007.31	Coupling, 1/4 MF Bsp brass (1)	1					10
1	26.0036.31	Coupling, 3/8 M-1/4 F Bsp brass (1)	1					10
2	14.3562.05	Washer, 6x11x1 mm Cu	1					10
3	26.0652.22	Hand nut, M24x1,5 - 17,5mm blue	1					3
4	26.0651.31	Plug, 14mm-1/4M Bsp brass	1					3
5	10.3109.95	O-ring, 2,4x9,3 mm Vi 70	2					25
6	10.4010.01	Back-up ring,10,2x13,9x1,2mm	1					50
7	10.3185.00	O-ring, 2,5x20 mm	1					10
8	26.0631.31	Coupling, M24x1,5-1/4 F Bsp brass (2)	1					3
8	26.0632.31	Coupling, M24x1,5-3/8 F Bsp brass (3)	1					3

(1) 26.0650.30 (2) 26.0630.20 (3) 26.0630.40

## **P.A. SpA EQUIPAGGIAMENTI TECNICI DEL LAVAGGIO**

Via Milano, 13 42048 Rubiera - (RE) ITALY  
Tel +39 0522 623611 (ric aut) - Fax +39 0522 629600  
*Info@pa-etl.it - www.pa-etl.it*

---

**COMPANY WITH  
QUALITY SYSTEM  
CERTIFIED BY DNV GL  
= ISO 9001 =**