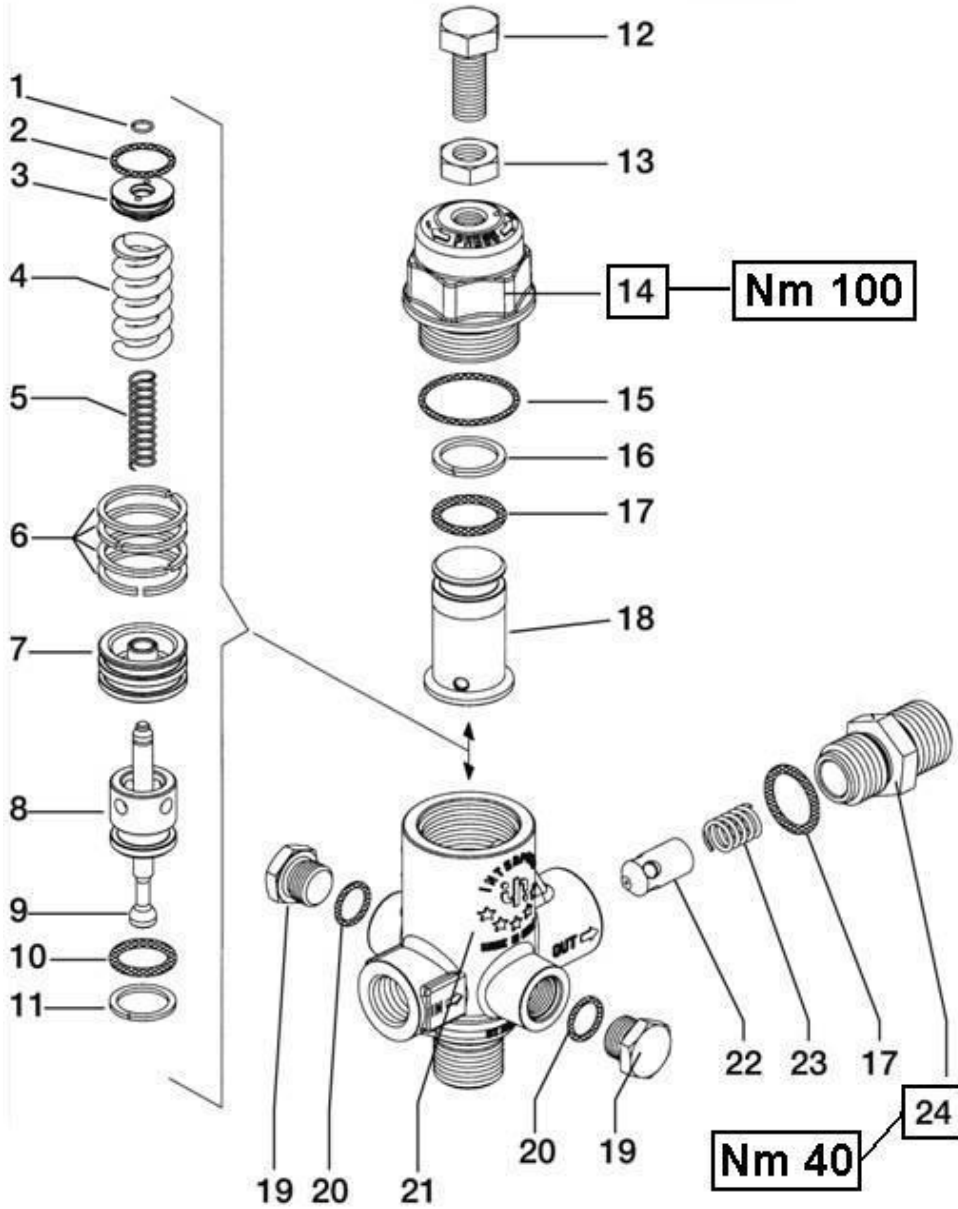


**REGOLATORI AUTOMATICI DI PRESSIONE – AUTOMATIC PRESSURE REGULATORS  
RÉGULATEURS AUTOMATIQUE DE PRESSION – AUTOMATISCHE DRUCKREGLER  
AUTOMÁTICO REGULADORES DE PRESIÓN – PRESSÃO REGULADORES AUTOMÁTICOS**



**KIT RICAMBI – SPARE KITS**

KIT NR.	KIT 168
Posizioni include Positions included	1 - 2 - 3 - 4 5 - 6 - 7 - 8 9 - 10 - 11
Nr. Pcs.	1

**K1**

**DIS. COD. 36.9523.00**

POS	COD.	DESCRIZIONE – DESCRIPTION KIT	NR
1	90.0060.00	Anello seeger Ø 6	168 1
2	90.3593.00	OR Ø 15.6x1.78 (2062)	168 1
3	36.3257.70	Piattello molla	168 1
4	94.7425.00	Molla Ø 14x35	168 1
5	94.7337.00	Molla Ø 7.3x32	168 1
6	92.7722.00	Fascia elastica Ø 27	168 4
7	36.3255.70	Pistoncino di comando	168 1
8	36.3256.66	Sede valvola	168 1
9	36.3254.66	Asta valvola	168 1
10	90.3835.00	OR Ø 15.08x2.62 (119)	168 1
11	90.5090.00	Anello antiest. Ø 15.8x20x1.3	168 1
12	99.3663.00	Vite M10x25 UNI 5740	1
13	92.2368.00	Dado M10x25 UNI 5589	1

POS	COD.	DESCRIZIONE – DESCRIPTION KIT	NR
14	36.3251.41	Corpo superiore	1
15	90.3606.00	OR Ø 26.7x1.78 (2106)	1
16	90.5107.00	Anello antiest. Ø 17.4x22x1.5	1
17	90.3841.00	OR Ø 17.12x2.62 (3068)	2
18	36.32527.0	Fine corsa	1
19	98.2041.00	Tappo G 1/4"x9	2
20	90.3585.00	OR Ø 10.82x1.78 (2043)	2
21	36.3250.41	Corpo inferiore	1
22	36.3258.66	Ugello	1
23	94.7375.00	Molla Ø 9.4x17	1
24	36.3253.70 36.3269.70	Niplo G 1/2" Niplo G 3/8" - OPTIONAL	1 1