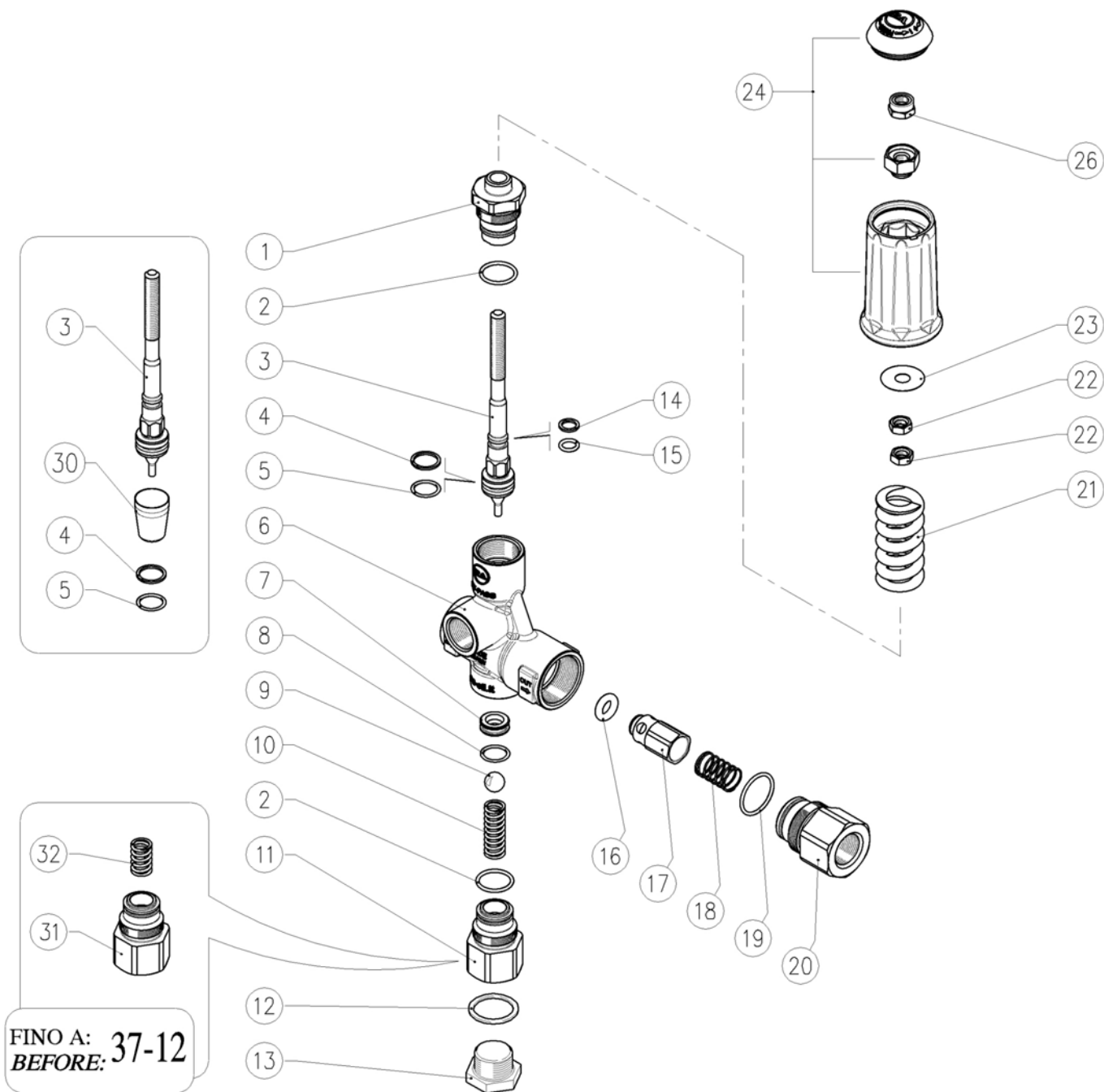


60.0427.00 VB 85Rv/180 unload. 1/2F Bsp with knob
 60.0427.05 VB 85Rv/180 unload. 1/2F Npt with knob


60.0427.60 VB 85Rv/310 unloader 1/2F Bsp + knob
 60.0427.65 VB 85Rv/310 unload. 1/2F Npt with knob



Pos.	P/N	Description	Q.ty	K1	K2	K3	K4
1	60.0491.31R	Piston holder, brass	1				3
2	10.3068.01R	O-ring, 1,78x17,17 mm Ni 85	2	•			10
3	60.0416.21R	Valve piston, Sst.-VB85R-Rv	1				5
4	10.4014.00R	Back-up ring, opn. 18x13,5x1,2 mm	2	•			10
5	10.3178.00R	O-ring, 2,62x13,1 mm	1	•			10
6	60.0486.35R	Housing -VB85, 1/2F Bsp brass	1				3
6	60.0497.35R	Housing -VB85, 1/2F Npt brass (1,2)	1				3
7	60.2803.51R	Sst seat, 10 mm	1	•			5
8	10.3064.01R	O-ring, 1,78x14 mm Ni 85	1	•			10
9	14.7465.00R	Ball, 1/2" Sst.	1	•			5
10	30.5304.51R	Spring, 2x29x9,9 mm Sst.	1				10
11	60.0441.31R	Suction coupl., 1/2F Bsp brass	1				3
11	60.0496.31R	Suction coupl., 1/2F Npt brass (1,2)	1				5
12	14.4290.00R	Washer, 22x27x1,5 mm alu.	1				10
13	60.0413.31R	Plug, brass 1/2 Bsp, hex.27	1				10
13	60.0444.31R	Grub screw, brass 1/2 Npt (1,2)	1				10

Pos.	P/N	Description	Q.ty	K1	K2	K3	K4
14	10.4008.00R	Back-up ring, opn. 8x11x1,2 mm	1	•			10
15	10.3055.00R	O-ring, 1,78x7,66 mm	1	•			10
16	10.3292.00R	O-ring, 4x8 mm	1	•			10
17	60.0488.99R	Shutter pin, brass+or 4x8 mm	1				10
18	60.0489.51R	Spring, 0,8x13,3x27 mm Sst.	1				5
19	10.3072.60R	O-ring, 1,78x21,95 mm Ni 85	1	•			10
20	60.2809.31R	Shutter coupl., 1/2F Bsp brass	1				3
20	60.1852.31R	Shutter coupl., 1/2F Npt brass (1,2)	1				3
21	60.0033.61R	Spring, 5,7x26x53 mm blue (3,2)	1				5
21	60.0012.61R	Spring, 5x25x50 mm white	1				5
22	11.4573.31R	Hex. nut, M8, brass	2				10
23	14.3720.40R	Washer, 9,2x24x0,5 mm	1				10
24	60.0148.24	Knob + Plug -PulsarRv	1				5
26	11.4589.10R	Hex. locknut, M8	1				10
30	10.4407.00R	Seal frame >VB60-80 zero **	1				1
32	60.0410.51R	Spring, 1,6x11,5x20 mm Sst.	1				5

** On request

Kit	P/N	Description	
K1	60.0468.24	Spares kit -VB85R-Rv, 10x1pcs.	1
(1)	60.0427.05	(2) 60.0427.65 (3) 60.0427.60	