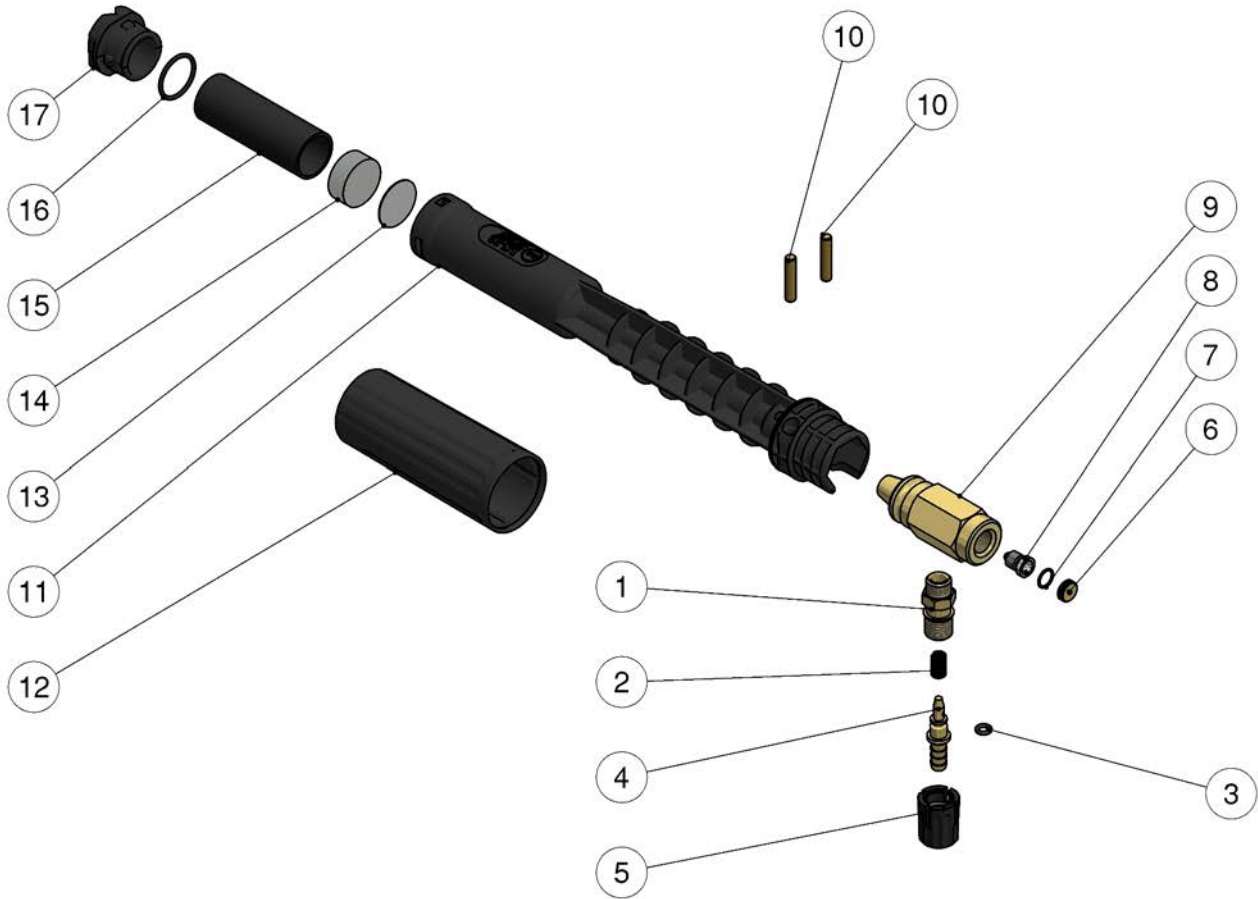


25.1800.65 LS12 Foamer, 1,5mm v.2

25.1815.65 LS12 Foamer 1,5mm Sst. v.2



Pos.	P/N	Description	Q.ty	K1	K2	K3	K4	
1	21.0173.31R	Coupling, M12x1-1/4M Bsp brass	1	•	•			10
1	21.0173.51R	Coupling, M12x1-1/4M Bsp Sst. (1)	1					10
2	21.0158.51R	Spring, 0,8x7x15 mm Sst.	1	•	•			10
3	10.3043.01R	O-ring, 1,78x4,48 mm Vi 70	1	•	•			10
4	21.0155.99R	Hose barb, d.8 mm brass+o-ring (2)	1	•				5
4	21.0155.90R	Hose barb, d.8 mm sst.+o-ring (1)	1		•			3
5	21.0171.84R	Inject.knob, 1/4F Bsp black	1	•	•			10
6	25.0085.31R	Nozzle insert	1					10
7	10.3003.00R	O-ring, 1x8 mm	1					10
8	21.0007.51R	Nozzle, M8x1 - 1,5 mm Sst.	1					10
9	25.1803.31R	Injector housing -LS12	1					3

Pos.	P/N	Description	Q.ty	K1	K2	K3	K4	
9	25.1803.51R	Injector Housing -LS12, Sst. (1)	1					3
10	30.0509.31R	Parallel pin, 5x24,5 mm brass	2					10
11	25.1801.85R	Lance housing -LS12 v.2	1					5
12	25.1805.84R	Knob -LS12	1					5
12	25.1805.85R	Knob -LS12 v.2	1					5
13	29.0802.53R	Diaphragm, 25x0,5 mm Sst.	1					10
14	25.1806.51R	Pressed strainer,25x10mm Sst.	1					10
15	25.1831.85R	Spacer ring -LS12	1					5
16	10.3072.10R	O-ring, 1,78x20,35 mm Vi 70	1					10
17	25.1802.85R	Front nozzle -LS10-12 black v.2	1					10

Kit	P/N	Description	
K1	21.0100.00R	Regul.+h.barb 8-M12mm brs. inje.	50
K2	21.0108.00R	Regulator+h.barb 8-M12x1 mm Sst.inject.	10

(1) 25.1815.65 (2) 25.1800.65