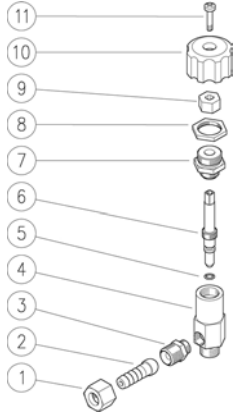


29.0954.00 RDY chem.val.90°,1/4MM Bsp+7mm h.bar.blk



Pos.	P/N	Description	Q.ty	K1	K2	K3	K4
1	29.0948.31	Ring nut, 1/4Bsp F brass	2				10
2	29.0947.31	8 mm hose barb,	2				10
3	29.0926.31	Coupling, 1/4M-1/8M Bsp c/sunk brass	1				10
4	29.0956.31	Casing -RDY, 1/4Bsp M brass	1				5
5	10.3043.01	O-ring, 1,78x4,48 mm Vi 70	1				10
6	29.0955.31	Shutter pin, M10x1 brass	1				10
7	29.0923.31	Nipple, 3/8Bsp M-1/4Bspt M brass	1				5
8	29.0932.31	Locknut, 3/8Bsp F brass	1				10
9	29.0924.31	Groove nut, brass	1				10
10	29.0931.84	Knob, PA black	1				10
11	16.1840.00	Screw, DIN7985 M4x14 mm z.pl.	1				10