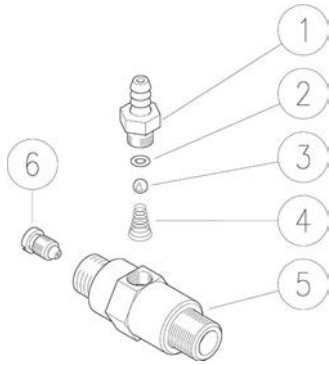


21.0018.12 Inject.,fix.,sst,3/8MM Bsp+1,2mm nzl

21.0018.15 Inject.,fix.,sst,3/8MM Bsp+1,5mm nzl

21.0018.18 Inject.,fix.,sst,3/8MM Bsp+1,8mm nzl



21.0018.21 Inject.,fix.,sst,3/8MM Bsp+2,1mm nzl

21.0018.68 Inject.,fix.,sst,3/8MM Npt+1,8mm nzl

21.0018.71 Inject.,fix.,sst,3/8MM Npt+2,1mm nzl

Pos.	P/N	Description	Q.ty	K1	K2	K3	K4	
1	21.0003.51R	Hose barb, 8 - M12x1 mm Sst.	1					5
2	10.3049.05R	O-ring, 1,78x5,28 mm PTFE	1	•				10
3	14.7421.01R	Ball, 1/4" Sst. Aisi 316	1	•				10
4	21.0160.51R	Tapered spring, Sst. -inject.	1	•				10
5	21.0159.51R	Inject.housing, 3/8MM Bsp Sst. (1)	1					2
5	21.0169.51R	Inject.housing, 3/8MM Npt Sst. (2)	1					2
6	21.0006.51R	Nozzle, M8x1 - 1,2 mm Sst. (3)	1					10
6	21.0007.51R	Nozzle, M8x1 - 1,5 mm Sst.	1					10
6	21.0002.51R	Nozzle, M8x1 - 1,8 mm Sst.	1					10
6	21.0004.51R	Nozzle, M8x1 - 2,1 mm Sst.	1					10
6	21.0157.51R	Nozzle, M8x1 - 2,3 mm Sst.	1					10

Kit	P/N	Description	
K1	21.0013.24	Spares kit -fix.inject.+OR tefl.3x1 pcs.	1

(1) 21.0018.21 (2) 21.0018.71 (3) 21.0018.12