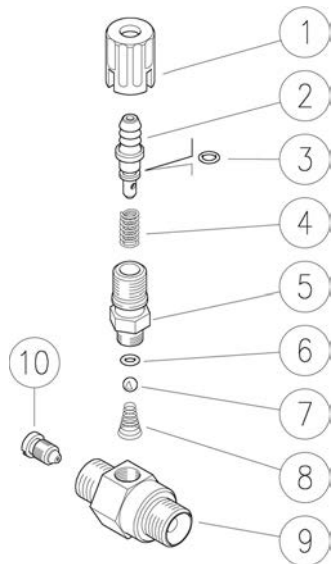


21.0119.15 Inject.,adj.,sst,3/8MM Bsp+1,5mm nzl

21.0119.18 Inject.,adj.,sst,3/8MM Bsp+1,8mm nzl

21.0119.21 Inject.,adj.,sst,3/8MM Bsp+2,1mm nzl



21.0120.18 Inject.,adj.,sst,3/8MM Npt+1,8mm nzl

21.0120.21 Inject.,adj.,sst,3/8MM Npt+2,1mm nzl

21.0120.23 Inject.,adj.,sst,3/8MM Npt+2,3mm nzl

Pos.	P/N	Description	Q.ty	K1	K2	K3	K4	
1	21.0171.84R	Inject.knob, 1/4F Bsp black	1					10
2	21.0155.90R	Hose barb, d.8 mm sst.+o-ring	1					3
3	10.3043.01R	O-ring, 1,78x4,48 mm Vi 70	1	•				10
4	21.0158.51R	Spring, 0,8x7x15 mm Sst.	1					10
5	21.0173.51R	Coupling, M12x1-1/4M Bsp Sst.	1					10
6	10.3049.05R	O-ring, 1,78x5,28 mm PTFE	1	•				10
7	14.7421.01R	Ball, 1/4" Sst. Aisi 316	1	•				10
8	21.0160.51R	Tapered spring, Sst. -inject.	1	•				10
9	21.0159.51R	Inject.housing, 3/8MM Bsp Sst. (1)	1					2
9	21.0169.51R	Inject.housing, 3/8MM Npt Sst. (2)	1					2
10	21.0007.51R	Nozzle, M8x1 - 1,5 mm Sst.	1					10
10	21.0002.51R	Nozzle, M8x1 - 1,8 mm Sst.	1					10
10	21.0004.51R	Nozzle, M8x1 - 2,1 mm Sst.	1					10
10	21.0157.51R	Nozzle, M8x1 - 2,3 mm Sst.	1					10

Kit	P/N	Description	
K1	21.0235.24	Spares kit -adj.inject.+tefl.O-R 4x1pcs	1

(1) 21.0119.21 (2) 21.0120.21