



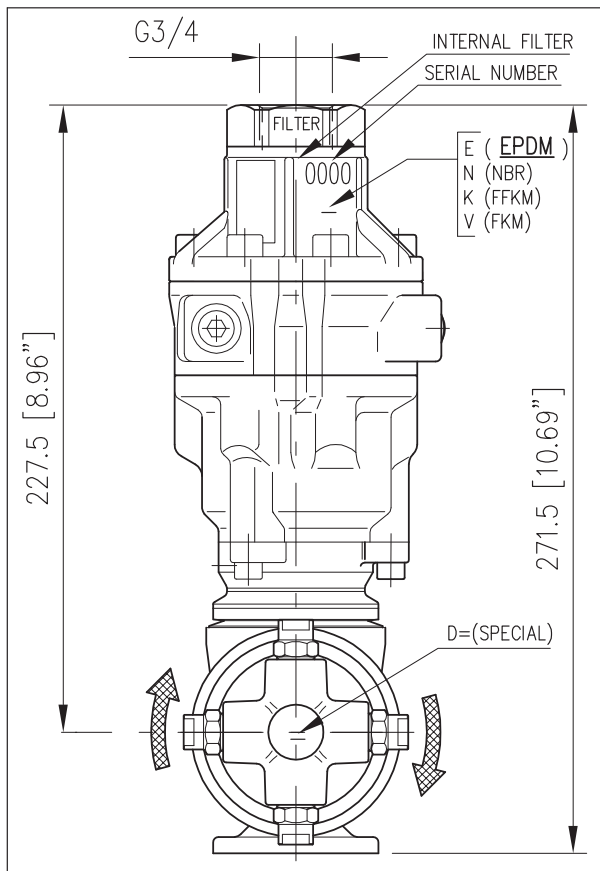
EQUIPAGGIAMENTI  
TECNICI  
LAVAGGIO

TESTINE ROTANTI  
MOD. A80R

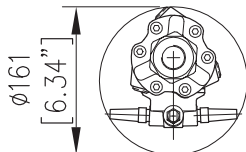
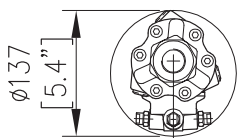
I	4	10
GB		
12.9410.00	22/05/08	

# A80R

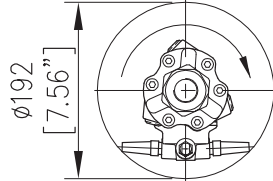
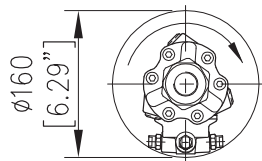
MANUALE D'ISTRUZIONE  
GENERAL INSTRUCTION BOOK



Foro entrata minimo  
in manuale  
Minimum inlet hole  
for manual operation



Foro entrata minimo  
in automatico  
Minimum inlet hole  
for automatic operation



### TESTINA AUTOMOVENTE PER PULIZIA CISTERNE

- Testina volumetrica, la velocità di rotazione è proporzionale alla portata in ingresso.
- Lavaggio superfici interne di contenitori e serbatoi.
- Portata ridotta, alta pressione, elevata forza di impatto.
- Copertura orbitale completa degli interni.
- Velocità di rotazione indipendente dalla temperatura dell'acqua.
- Filtro in entrata.
- Costruzione in acciaio inox.
- Idonea per impiego settore alimentare.

### ATTENZIONE !

- La Testina STANDARD è fornita di guarnizioni (DINAMICHE) in PTFE + O-Ring EPDM.
- Lubrificare esclusivamente con GRASSO SILICONICO codice: 14.6552.00
- Per l'utilizzo di liquidi detergenti, additivi chimici ecc. non compatibili con le guarnizioni standard è indispensabile contattare il nostro UFFICIO TECNICO.
- A richiesta le guarnizioni (DINAMICHE) O-RING sono disponibili anche in diverso materiale, NBR-FFKM(kalrez)-FKM(viton).
- Le guarnizioni (STATICHE) sono in FKM (viton).

### SELF ROTATING CLEANING HEAD

- This is a self-propelled tank cleaning head: when the flow rate increases, the head rotates faster.
- Cleaning of interior surfaces of tanks and drums.
- Reduced flow, high pressure, high cleaning impact.
- Complete orbital coverage of all interior surfaces.
- Rotating speed independent from water temperature.
- Inlet filter.
- Stainless steel construction.
- Suitable for utilization in food industry.

### ATTENTION !

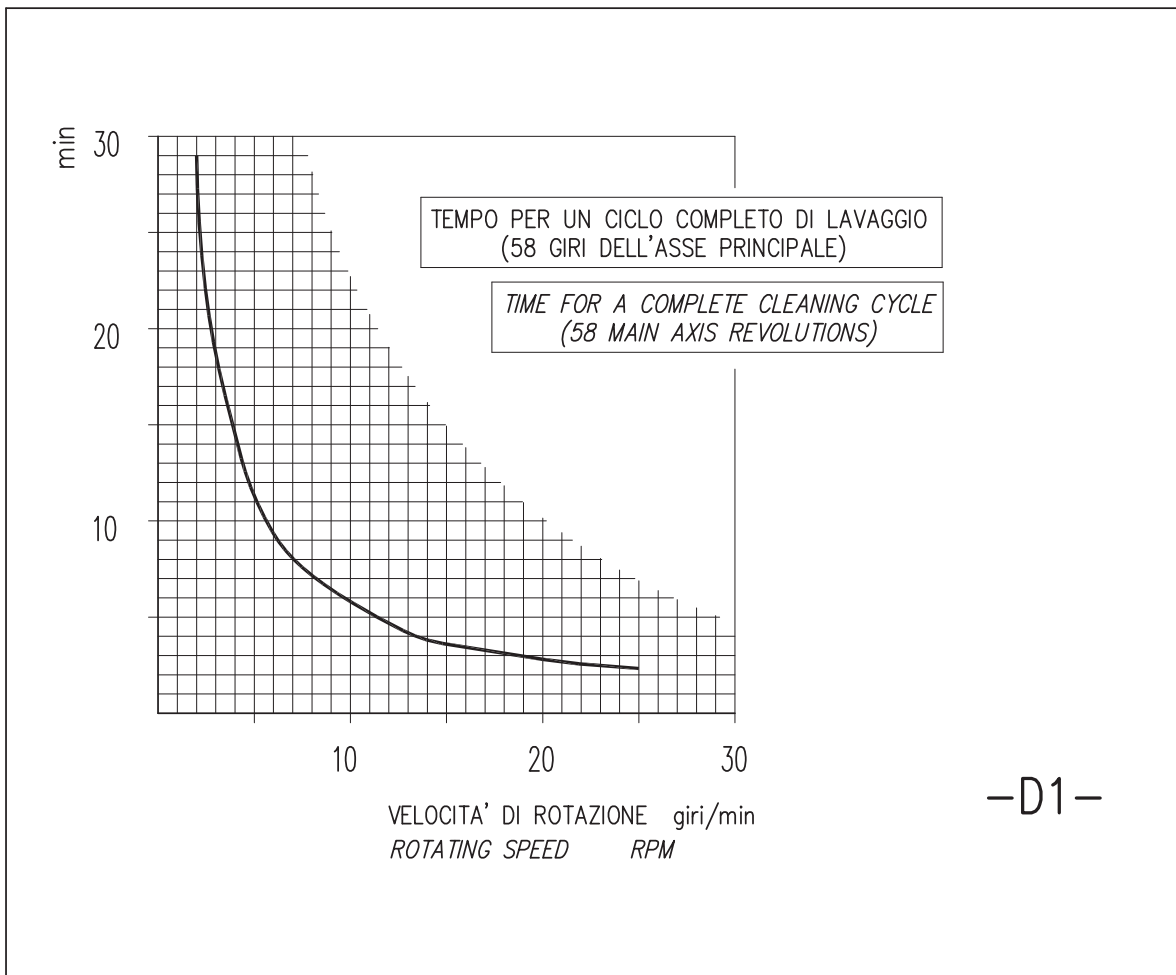
- The STANDARD Tank cleaning head is supplied with seals (DYNAMIC) in PTFE + O-Ring EPDM.
- Lubricate ONLY with SILICONE GREASE P/N: 14.6552.00
- For use with Detergent liquid, Chemical additives etc that are not compatible with the standard seals, it is essential to contact our TECHNICAL OFFICE for further information.
- On request, the O-RING seals (DYNAMIC) are available in different materials such as NBR-FFKM(kalrez)-FKM(viton).
- The STATIC seals are in FKM (viton).

ATTENZIONE: NON UTILIZZARE  
L'APPARECCHIO PRIMA DI AVER LETTO  
QUESTO MANUALE DI ISTRUZIONE

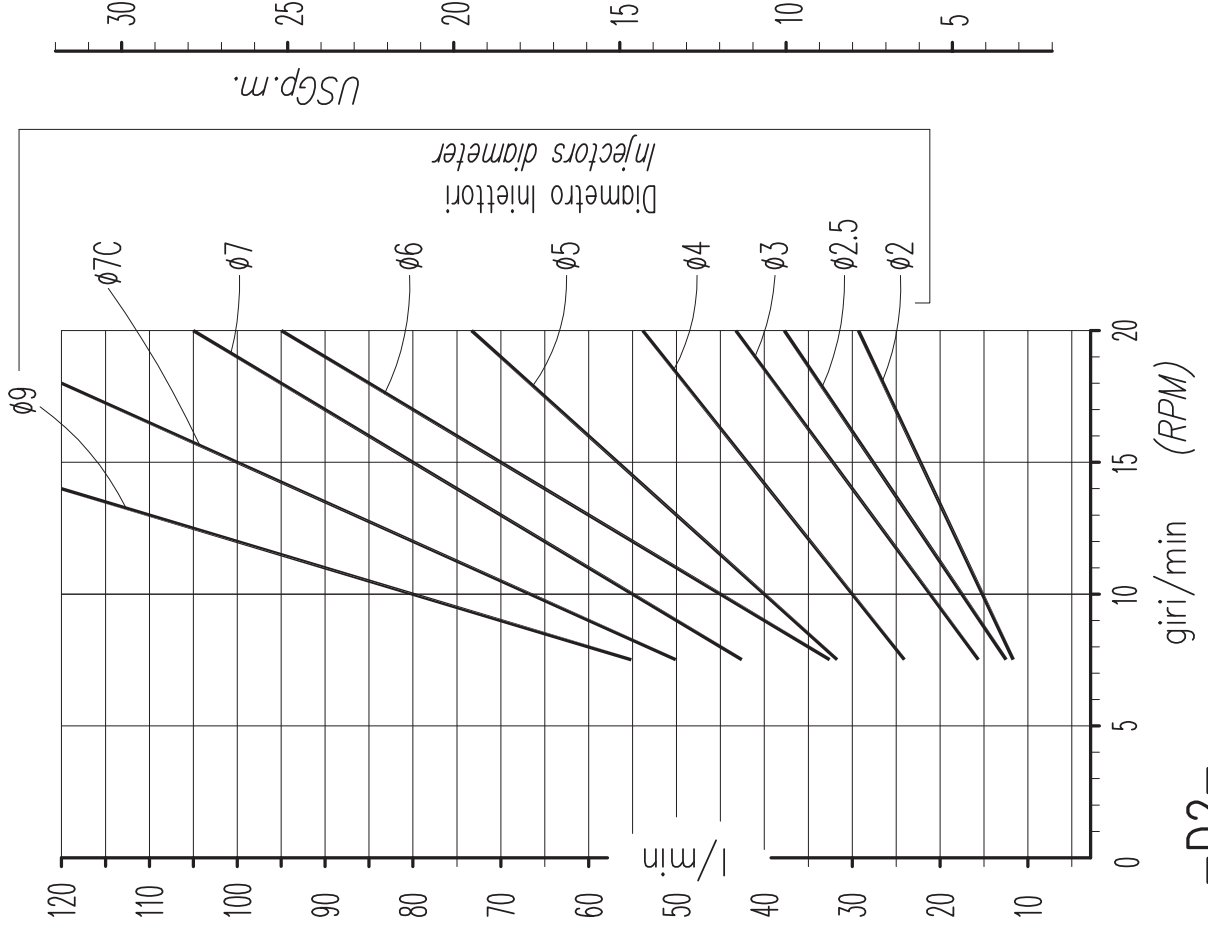
CAUTION: DO NOT USE THE  
CLEANING HEAD BEFORE HAVING READ  
THE INSTRUCTION BOOK

CARATTERISTICHE TECNICHE  
 TECHNICAL SPECIFICATIONS

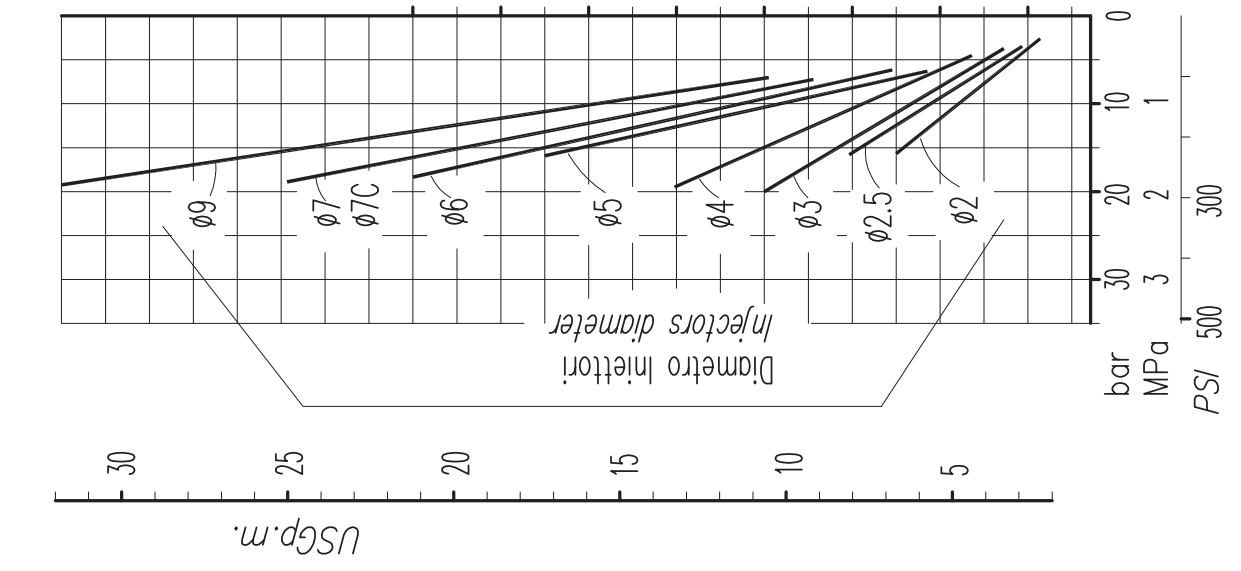
- PRESSIONE NOMINALE RATED PRESSURE	30÷140 bar - 3÷14 MPa (435-2000 psi)
- PRESSIONE CONSENTITA PERMISSIBLE PRESSURE	160 bar - 16 MPa (2300 psi)
- PORTATA MASSIMA MAX FLOW RATE	20 - 120 l/min (5.3-32 USGp.m.)
- TEMPERATURA MASSIMA ACQUA MAX WORKING TEMPERATURE	0-90°C (32-195°F)
- PESO WEIGHT	5.9 kg (208 oz)
- FREQUENZA ROTAZIONE ASSE PRINCIPALE MAIN AXIS ROTATING SPEED	10-16 giri/min (RPM)
- ATTACCO ALIMENTAZIONE ACQUA INLET CONNECTION SIZE	G 3/4"
- FILTRO IN INGRESSO INLET FILTER	550 µm
- ATTACCO UGELLI (2 o 4) NOZZLES CONNECTION (2 or 4)	1/4 NPT



VARIAZIONE DEI GIRI IN FUNZIONE DELLA PORTATA  
RPM VARIATION IN RELATION TO FLOW



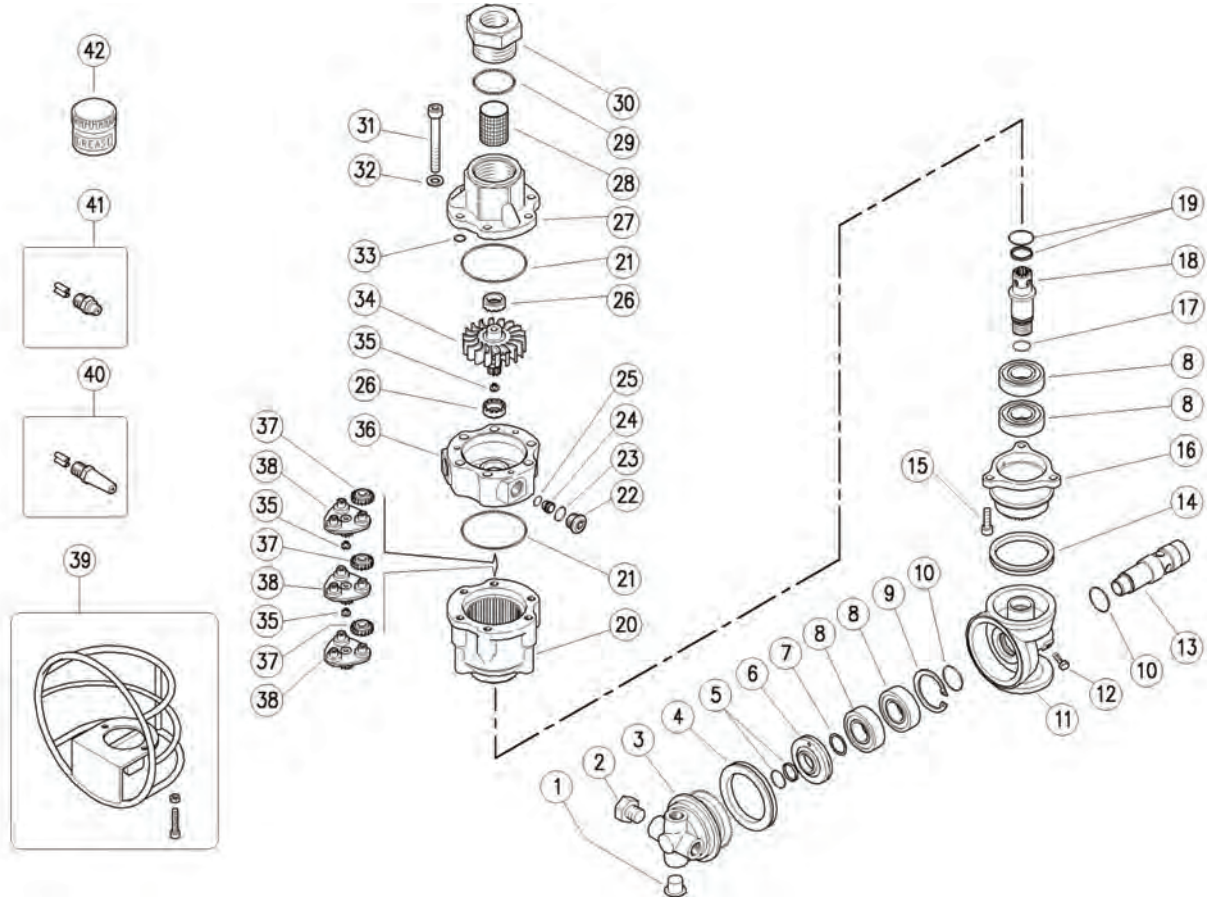
CADUTA DI PRESSIONE IN FUNZIONE DELLA PORTATA  
LOSS OF PRESSURE IN RELATION TO FLOW



-D2-

- 25.4820.20 A80R Tank clean.,s/prop.,2mm inject.
- 25.4820.25 A80R Tank clean.,s/prop.,2,5mm inject.
- 25.4820.30 A80R Tank clean.,s/prop.,3mm inject.
- 25.4820.40 A80R Tank clean.,s/prop.,4mm inject.
- 25.4820.50 A80R Tank clean.,s/prop.,5mm inject.
- 25.4820.60 A80R Tank clean.,s/prop.,6mm inject.
- 25.4820.70 A80R Tank clean.,s/prop.,7mm inject.

- 25.4820.80 A80R Tank clean.,s/prop.,7mm short inj.
- 25.4820.90 A80R Tank clean.,s/prop.,9mm inject.
- 25.4825.25 A80R Tank cl.,2,5mm inject,strght nozzl.
- 25.4825.60 A80R Tank cl.,6mm inject,straight nozzl.
- 25.4825.70 A80R Tank cl.,7mm inject,straight nozzl.
- 25.4826.60 A80R/6mm Clean.head,strgt.nozzles-Viton



Pos.	P/N	Description	Q.ty	K1	K2	K3	K4	Pos.	P/N	Description	Q.ty	K1	K2	K3	K4
1	15.3720.14R	Plug, 1/4" Bsp plast.	2				4	24	80.0227.51R	Injector, 2,5mm Sst. (4) **	3				3
2	15.3721.14R	Grub screw, Sst. 1/4M Npt	2				10	24	80.0222.51R	Injector, 3mm Sst. (5) **	3				3
3	80.0132.52R	Nzl hold. pinion, z.58 4x1/4Npt F Sst.	1				1	24	80.0223.51R	Injector, 4mm Sst. (6) **	3				3
3	80.0134.52R	Strght.nzl hold.pinion,z.58 4x1/4Npt F (1)	1				1	24	80.0224.51R	Injector, 5mm Sst. (7)	3				3
3	80.0134.52R	Strght.nzl hold.pinion,z.58 4x1/4Npt F (2)	1				1	24	80.0225.51R	Injector, 6mm Sst. (8) **	3				3
4	10.2060.05R	V-ring seal, 54x5 mm	1	•			5	24	80.0226.51R	Injector, 7mm Sst. (9) **	3				3
5	10.2030.16R	Stem seal, 16x21x2,2 mm +O-ring Epdm	1	•			5	24	80.0228.51R	Short injector, 7mm Sst. (10) **	3				3
5	10.2035.16R	Seal, 16x21x2,1 mm+Or.iVit. (2) **	1				5	25	10.3003.00R	O-ring, 1x8 mm	3	•			10
5	10.2033.16R	Seal,16mm+O-ring, kalrez **	1				1	26	80.0212.84R	Bushing, plast.	2	•			10
6	80.0211.51R	Spacer ring, 16x41,8x8,8mm Sst.	1				5	27	80.0201.52R	Manifold, Sst.	1				1
7	10.1021.00R	Snap ring, d.20 mm Sst.	1	•			10	28	28.0014.53R	Net, 38mesh-400µm Sst.	1				10
8	11.4420.42R	Ball-bearing, 20x42x12 mm - 2RS1 Sst.	4	•			2	29	10.3208.36R	O-ring, 2,62x36,17 mm Vi 70	1	•			5
9	10.1025.05R	Snap ring, l 42 Sst.	1	•			5	30	80.0217.51R	Coupl., M40x2 M -3/4F Bsp Sst.	1				1
10	10.3200.10R	O-ring, 2,62x23,47 mm Vi 70	2	•			10	31	16.1955.60R	Screw, DIN912 M8x60 mm Sst.	6				10
11	80.0135.52R	Geared shaft end, Sst.	1				1	32	14.3573.00R	Safet. washer, 8,4x2 mm Sst.	6				10
12	16.1870.02R	Screw, DIN933 M5x12 mm Sst.	2				10	33	10.3109.93R	O-ring, 2,4x8,3 mm Vi 70	3	•			10
13	80.0242.51R	Pin, 24x85mm Sst.	1				1	34	80.0203.52R	Turbine, Sst.	1				1
14	10.2050.05R	V-ring seal, 45x5 mm	1	•			2	35	80.0213.84R	Shim pin, plast.	3	•			10
15	16.1896.20R	Screw, DIN912 M6x20 mm Sst.	3				10	36	80.0202.52R	Stator, Sst.	1				1
16	80.0131.52R	Pinion, z.39 Sst.	1				1	37	80.0204.38R	Planetary gear, z.19 brz	9	•			9
17	10.3066.10R	O-ring, 1,78x15,6 mm Vi 70	1				10	38	80.0205.00R	Planetary gear holder+3 pins, Sst.	3				1
18	80.0243.51R	Geared shaft, Sst.	1				1	39	25.4822.00R	Protect. -A80 R -extnd nzl. **	1				1
19	10.2030.18R	Stem seal, 18x23x2 mm +O-ring Epdm	1	•			5	40	80.0418.23R	Xnd. nzl., sst. 07 1/4M Npt+guid.vane **	2-4				2
19	10.2035.18R	Seal, 18mm -slid.block +O-ring, vit. (2) **	1				2	40	80.0420.23R	Xnd. nzl., sst. 09 1/4M Npt+guid.vane **	2-4				2
19	10.2033.18R	Seal, 18mm -slid.block +O-ring, kalrez **	1				1	40	80.0430.23R	Xnd. nzl., sst. 20 1/4M Npt +guid.vane **	2-4				2
20	80.0207.52R	Ring gear, z.50 Sst.	1				1	40	80.0440.23R	Xnd. nzl., sst. 30 1/4M Npt +guid.vane	2-4				2
21	10.3080.58R	O-ring, 1,78x56,87 mm Vi 70	2	•			10	41	16.1380.45R	Nzl, sst,1/4M Npt+guid.vane 00.045 ***	2-4				10
22	80.0219.51R	Plug, int.hex., M14x1 Sst.	3		•		3	42	14.6552.00R	Teflon silicon grease x30g.>All **	1				2
23	10.3060.10R	O-ring, 1,78x12,42 mm Vi 70	3	•			10	42	14.6550.00R	Teflon grease x30g.>no Epdm **	1				2
24	80.0221.51R	Injector, 2mm Sst. (3) **	3				3								

\*\* On request

\*\*\* Different measures available

Kit	P/N	Description	Q.ty
K1	25.4828.24	Seals Spares Kit - A80R 10x1pcs.	1
K2	25.4852.24	Spares Kit - A80R 7x1pcs.	1
K3	25.4810.40	A80 injector kit size 040, w/plug	1

(1) 25.4825.25 (2) 25.4826.60 (3) 25.4820.20 (4) 25.4820.25 (5) 25.4820.30 (6) 25.4820.40 (7) 25.4820.50 (8) 25.4820.60 (9) 25.4820.70 (10) 25.4820.80