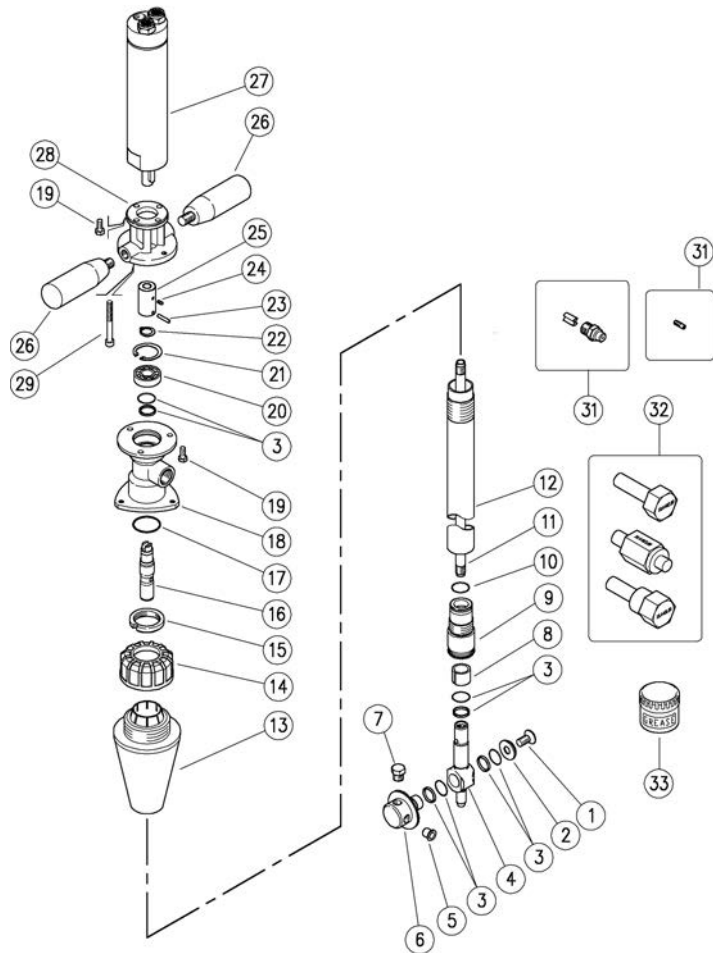


25.4520.00 M63PA-50 Tank cl.,air -driv. 900mm

25.4520.04 M63PA-45 Tank cl.,air -driv. 900mm



Pos.	P/N	Description	Q.ty	K1	K2	K3	K4
1	16.1954.12R	Screw, DIN7991 M8x12 mm Sst.	1				10
2	80.0015.51R	C/sunk washer, 8,5x22x4,5mm Sst.	1				3
3	10.2030.00R	Stem seal, 15x20x2,2 mm +O-ring	4	•			4
4	80.0005.52R	Buffer, M10 Sst.	1				1
5	15.3710.18R	Plug, 1/8" Bsp plast.	2				4
5	15.3704.00R	Plug, M4 plast.	2				4
6	80.0014.51R	Nzl hold. pinio.z.57, 4x1/8Npt F sst.	1				1
6	80.0016.51R	Nzl hold. pinion, z.57, M4 FFFF Sst.	1				1
7	15.3711.18R	Grub screw, 303 Sst. 1/8M Npt	2				4
7	16.1830.00R	Screw, DIN912 M4x8 mm Sst.	2				10
8	80.0009.85R	Bushing, opn. 15x19x14,8mm PTFE	1	•			5
9	80.0027.23R	Pinion.34 Sst+Bushing,opn.15mm	1				1
10	10.3184.10R	O-ring, 2,62x18,72 mm Vi 70	1	•			10
11	80.0003.56R	Tube, M10x1 MM 894mm Sst.	1				1
12	80.0052.56R	Tube, M28x1 M 895mm Sst.	1				1
13	80.0021.84R	Tapered plug, TPEs black	1		•		3
14	80.0316.84R	Ring nut, PP black	1		•		10
15	80.0012.51R	Ring nut, M28x1 Sst.	1				2

Pos.	P/N	Description	Q.ty	K1	K2	K3	K4
16	80.0002.51R	Propeller shaft, Sst.	1				1
17	10.3205.10R	O-ring, 2,62x26,64 mm Vi 70	1	•			10
18	80.0051.52R	Manifold, 3/8F Bsp Sst.	1				1
19	16.1870.02R	Screw, DIN933 M5x12 mm Sst.	6				10
20	11.4412.28R	Ball-bearing, 12x28x8 mm - 2RS1 Sst.	1	•			3
21	10.1011.05R	Snap ring, I 28 Sst.	1	•			10
22	10.0999.05R	Snap ring, E 12 Sst.	1	•			10
23	15.1030.00R	Roll pin, 3x16 mm Sst.	1				10
24	16.2101.10R	Set screw, DIN913 M4x5 mm Sst.	1				10
25	80.0037.51R	Joint, 11 x37mm Sst.	1				5
26	13.0600.00R	Knob M10x15 mm	2				2
27	13.0800.00R	Pneumatic gearmotor	1				1
28	80.0036.42	Flange for air-driven motor, Al	1				1
29	16.2115.00R	Screw, DIN912 M5x50 mm Sst.	1				10
31	16.1363.45R	Nzl, sst,1/8M Npt+guid.vane 00.045 **	2-4				10
31	25.1095.51R	Nozzle, 045 - M4 Sst. blue ***	2-4				10
32	25.4531.24	Seal Setup Tool Kit - M63E/P 3pcs. **	1				1
33	14.6552.00R	Teflon silicon greas. 30g.>All **	1				2

** On request

*** Different measures available

Kit	P/N	Description	Q.ty
K1	25.4525.24	Spares Kit - M63E 3x1pcs.	1
K2	25.4530.24	Ball-bear. Spares Kit - M63E 4x1pcs.	1
K3	80.0020.00	Tapered plug -M63	1