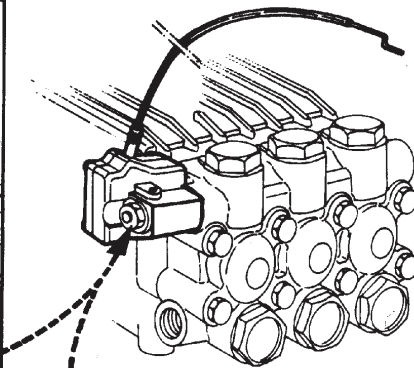
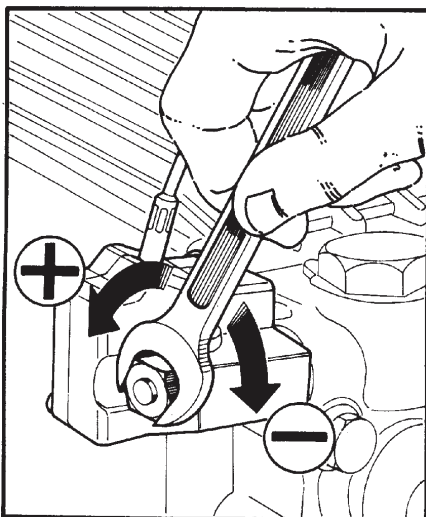
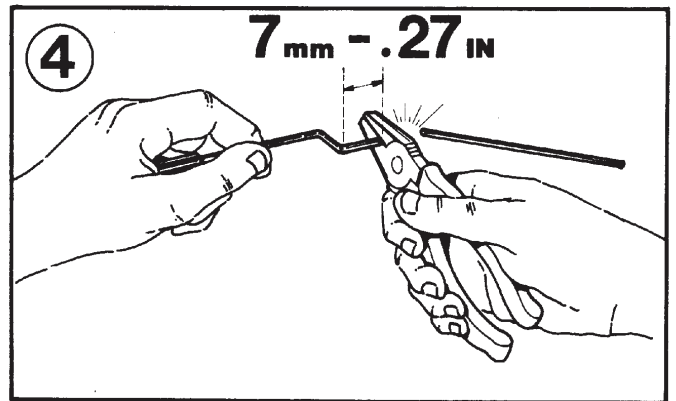
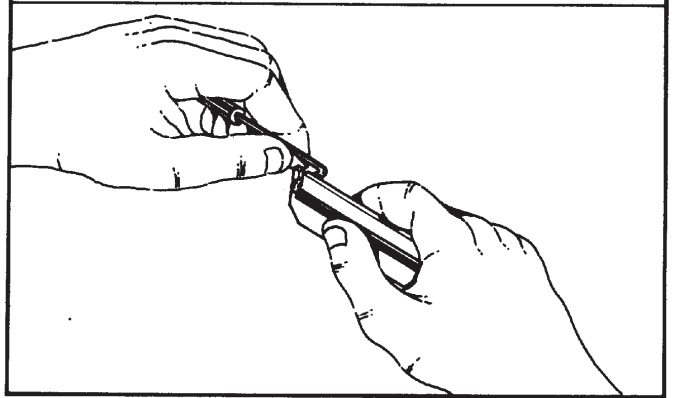
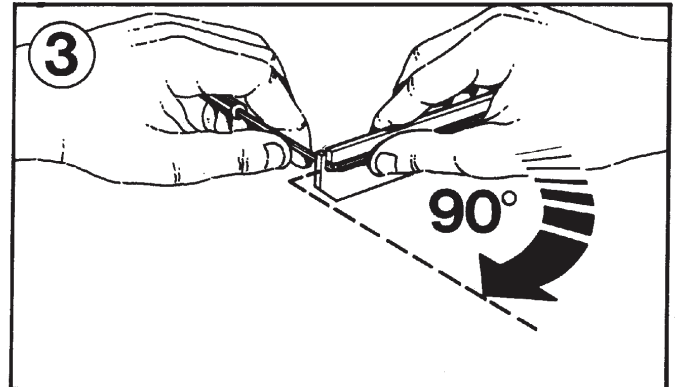
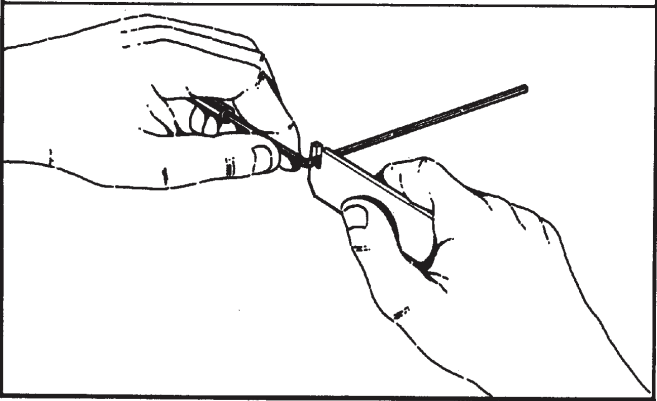
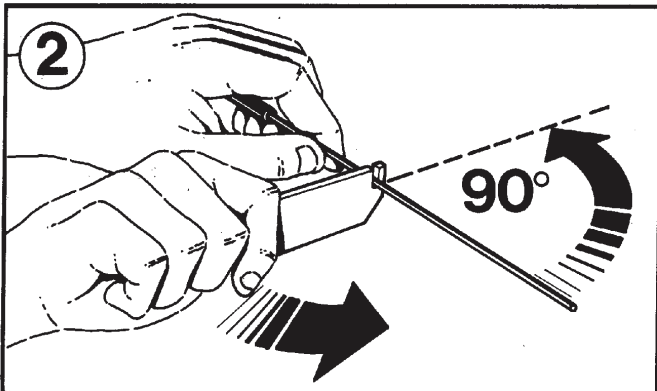
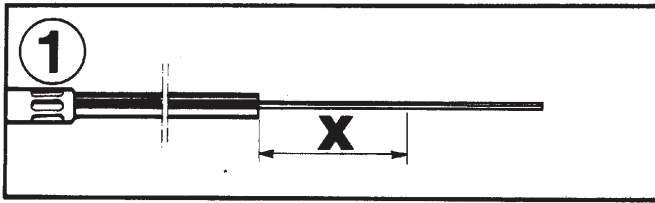


# INSTRUCTIONS FOR ASSEMBLY ISTRUZIONI PER IL MONTAGGIO



- ADJUSTING SCREW
- VIS DE REGLAGE
- VERSTELLSCHRAUBE
- TORNILLO DE REGULACIÓN
- VITE DI REGISTRO

- THE STROKE CAN BE ADJUSTED FROM 0 TO 30 mm. (0-1.18 in)
- LA COURSE DE TRAVAIL PEUT ÊTRE REGLÉE DE 0 À 30 mm.
- DER NUTZHUBKANN VON 0 BIS 30 mm. VERSTELLT WERDEN.
- LA CARRERA DE TRABAJO PUEDE SER REGULADA DE 0 A 30 mm.
- LA CORSA DI LAVORO PUÒ ESSERE REGOLATA DA 0 A 30 mm.